



DONGYING ZHONGBANG RUBBER&PLASTIC CO.,LTD

ADD: GAOLIU INDUSTRY PARK,DAOZHUANG TOWN,DONGYING CITY,SHANDONG PROVINCE,CHINA,257336.

Contact:Ada Xu

Wechat:Ada13021566068

Whatsapp:008613021566068

SKYPE:adaxu2013@hotmail.com

Email: adaxu2020@aliyun.com dyhose2020@gmail.com

Website:www.dyhose.com

24 hours customer service mobile:008613021566068

DONGYING ZHONGBANG RUBBER&PLASTIC CO.,LTD



CATALOG

1. Hydraulic Hose 01

- 1.1 SAE 100R1 AT / DIN20022 EN 853 1SN
- 1.2 Fuel Dispenser Hose
- 1.3 SAE 100R2 AT / DIN20022 EN 853 2SN
- 1.4 DIN EN856 4SP/4SH

2. Industry Hose 02

- 2.1 Steam Hose
- 2.2 Welding Hose
- 2.3 Rubber Air/Water Hose
- 2.4 Fuel Oil Hose
- 2.5 Rubber Suction&Discharge Hose
- 2.6 Food Grade Rubber Hose
- 2.7 Sandblast Hose

3. RUBBER SHEET 06

4. PVC HOSE 06

- 4.1 PVC LPG Gas Hose
- 4.2 PVC Welding Hose
- 4.3 PVC Air Hose
- 4.4 PVC Layflat Hose
- 4.5 PVC Steel Wire Hose
- 4.6 PVC Transparent Hose
- 4.7 PVC Crochet Anti-twist Hose
- 4.8 PVC Garden Hose
- 4.9 PVC Suction Hose
- 4.10 PVC Fiber Reinforced Hose
- 4.11 PVC Sprayer Hose

5. Accessories 13

- 5.1 Flange
- 5.2 Couplings
- 5.3 Clamps
- 5.4. Machine For Dredger

SAE 100R1 AT / DIN20022 EN 853 1SN

Tube: Black, oil resistant synthetic nitrile rubber
Reinforcement: 1Ply high tensile steel wire braided
Cover: Black, Abrasion and weather resistant synthetic rubber
Surface: Wrapped surface, smooth surface
Use: Petroleum based hydraulic fluid, gasoline, water, diesel fuels, lubricating oils, glycol, mineral oils, and more.
Temperature range: -40°C to +100°C (-40 °F to +212 °F)



Part No.	Size		I.D.	O.D.	W.P.		B.P.		Weight
	dash	Inch			Bar	Psi	Bar	Psi	
R1AT-06	1/4"		6.4	14.1	190	2755	760	10991	0.23
R1AT-08	5/16"		7.9	15.7	172	2494	688	9991	0.26
R1AT-10	3/8"		9.5	18.1	155	2247.5	620	8990	0.3
R1AT-13	1/2"		12.7	21.5	138	2001	552	7990	0.36
R1AT-16	5/8"		15.9	24.7	103	1493.5	412	5989	0.46
R1AT-19	3/4"		19	28.6	86	1247	344	5003	0.56
R1AT-25	1"		25.4	36.6	69	1000.5	276	4002	0.74
R1AT-32	1-1/4"		31.8	44.8	43	623.5	172	2494	1.06
R1AT-38	1-1/2"		38.1	52	34	493	136	2001	1.36
R1AT-51	2"		50.8	65.9	26	377	104	1494	1.65
1SN-06	1/4"		6.4	13	225	3263	900	13052	0.23
1SN-08	5/16"		7.9	14.7	215	3118	860	12472	0.26
1SN-10	3/8"		9.5	17	180	2610	720	10440	0.3
1SN-13	1/2"		12.7	20.1	160	2320	640	9280	0.36
1SN-16	5/8"		15.9	23.2	130	1885	520	7540	0.46
1SN-19	3/4"		19	27.2	105	1523	420	6092	0.56
1SN-25	1"		25.4	35.1	88	1276	352	5104	0.74
1SN-32	1 1/4"		31.8	42.8	63	914	252	3656	1.06
1SN-38	1 1/2"		38.1	49.6	50	725	200	2900	1.36
1SN-51	2"		50.8	62.5	40	580	160	2320	1.65

FUEL DISPENSOR HOSE

Tube: oil, gasoline and diesel resistant smooth black nitril rubber
Reinforcement: one high tensile steel wire braid
Cover: flame, oil, fuel, abrasion, ozone and weather resistant synthetic rubber
Surface: smooth surface
Use: for all types of gasoline dispensing applications
Temperature range: -40°C to +100°C (-40 °F to +212 °F)



Size		I-D	O-D	Anti-static	W-P	B-P	Length
Inch	mm						
5/8"	16	15.4~16.8	24.5±0.4	R< 1MΩ	20	80	4/15/25/50
3/4"	19	18.5~19.9	29.0±0.4	R< 1MΩ	20	80	4/15/25/50
7/8"	22	20.7~22.3	31.5±0.4	R< 1MΩ	20	80	4/15/25/50
1"	25	24.9~26.3	36.0±0.4	R< 1MΩ	20	80	4/15/25/50

SAE 100R2 AT / DIN20022 EN 853 2SN

Tube:Black, oil resistant synthetic nitrile rubber

Reinforcement: 2Ply high tensile steel wire braided

Cover: Black, Abrasion and weather resistant synthetic rubber

Surface: Wrapped surface,smooth surface

Use:Petroleum based hydraulic fluid,gasoline, water, diesel fuels, lubricating oils, glycol, mineral oils, and more.

Temperature range: -40°C to +100°C (-40 °F to +212 °F)



Part No.	Size	I.D.	O.D.	W.P.		B.P.		Weight
				Bar	Psi	Bar	Psi	
dash	Inch	mm	mm	Bar	Psi	Bar	Psi	Kg/m
R2AT-06	1/4"	6.4	15.9	345	5003	1380	20000	0.38
R2AT-08	5/16"	7.9	17.3	293	4249	1172	17000	0.45
R2AT-10	3/8"	9.5	19.7	276	4002	1104	16000	0.53
R2AT-12	1/2"	12.7	23.1	241	3495	964	13993	0.65
R2AT-16	5/8"	15.9	26.3	189	2741	756	10965	0.76
R2AT-19	3/4"	19	30.2	155	2248	620	8990	1
R2AT-25	1"	25.4	38.9	138	2001	552	8000	1.4
R2AT-32	1 1/4"	31.8	49.6	112	1624	448	6500	2.14
R2AT-38	1 1/2"	38.1	56	86	1247	344	5000	2.55
R2AT-51	2"	50.8	68.6	78	1131	312	4525	3.3
2SN-06	1/4"	6.4	15	400	5800	1600	23200	0.38
2SN-08	5/16"	7.9	16.7	350	5075	1400	20300	0.45
2SN-10	3/8"	9.5	18.8	330	4785	1320	19140	0.53
2SN-12	1/2"	12.7	21.8	275	3988	1100	15952	0.65
2SN-16	5/8"	15.9	24.8	250	3625	1000	14500	0.76
2SN-19	3/4"	19	28.9	215	3118	860	12472	0.95
2SN-25	1"	25.4	37.5	165	2393	660	9572	1.28
2SN-32	1 1/4"	31.8	47.3	125	1813	500	7252	2.16
2SN-38	1 1/2"	38.1	53.5	90	1305	360	5220	2.58
2SN-51	2"	50.8	66.8	80	1160	320	4640	3.3

DIN EN856 4SP/4SH

Tube:Black, oil resistant synthetic nitrile rubber

Reinforcement: 4Ply high tensile steel wire spiral

Cover: Black, Abrasion and weather resistant synthetic rubber

Surface: Wrapped surface

Use:Petroleum based hydraulic fluid,gasoline, water, diesel fuels, lubricating oils, glycol, mineral oils, and more.

Temperature range: -40°C to +100°C (-40 °F to +212 °F)



Part No.	Size	I.D.	O.D.	W.P.		B.P.		Weight
				Bar	Psi	Bar	Psi	
dash	Inch	mm	mm	Bar	Psi	Bar	Psi	Kg/m
4SP-10	3/8"	9.5	21.4	445	6453	1780	25812	0.8
4SP-12	1/2"	12.7	24.6	425	6163	1700	24652	1.15
4SP-16	5/8"	15.9	28.2	350	5075	1400	20300	1.26
4SP-19	3/4"	19	31.4	350	5075	1400	20300	1.44
4SP-25	1"	25.4	38.8	280	4060	1120	16240	2.15
4SP-32	1 1/4"	31.8	47	210	3045	840	12180	2.75
4SP-38	1 1/2"	38.1	53.1	185	2683	740	10732	3.35
4SP-51	2"	50.8	66.5	165	2393	660	9572	4.6
4SH-19	3/4"	19	32.2	420	6090	1680	24360	1.56
4SH-25	1"	25.4	38.7	380	5510	1520	22040	2.25
4SH-32	1 1/4"	31.8	45.5	345	5003	1380	20012	2.92
4SH-38	1 1/2"	38.1	53.5	290	4205	1160	16820	3.44
4SH-51	2"	50.8	68.1	250	3625	1000	14500	4.9

STEAM HOSE

Construction: Made of excellent heat-resistant rubber,

Reinforcement: 1Ply/2Ply steel wire braided/spiral.

Cover:black/red,Abrasion,ozone and weather resistant synthetic rubber

Surface:Wrapped surface

Use: For conveying saturated steam and super heated water continually or intermittently

Temperature range: -40 °C -210 °C (-40 °F to +414 °F)



Type	Size		OD	W.P.		B.P.		Bend Radius	Length
	Inch	mm		Bar	Psi	Bar	Psi		
1Ply	10	3/8"	21.5	17	255	50	720	130	20/50
	13	1/2"	24.5	17	255	50	720	180	20/50
	16	5/8"	27.5	17	255	50	720	205	20/50
	19	3/4"	30.5	17	255	50	720	240	20/50
	22	7/8"	33.5	17	255	50	720	280	20/50
	25	1"	37	17	255	50	720	300	20/50
	32	1-1/4"	44	17	255	50	720	420	20/40
	38	1-1/2"	50.5	17	255	50	720	500	20/40
	45	1-3/4"	57.5	17	255	50	720	500	20/40
	51	2"	63.5	17	255	50	720	630	20/40
2Ply	64	2-1/2"	77.5	17	255	50	720	700	20/40
	10	3/8"	23	20	300	60	860	130	20/50
	13	1/2"	26	20	300	60	860	180	20/50
	16	5/8"	29	20	300	60	860	205	20/50
	19	3/4"	32	20	300	60	860	240	20/50
	22	7/8"	35	20	300	60	860	280	20/50
	25	1"	38.5	20	300	60	860	300	20/50
	32	1-1/4"	45.5	20	300	60	860	420	20/40
	38	1-1/2"	52	20	300	60	860	500	20/40
	45	1-3/4"	59	20	300	60	860	500	20/40
	51	2"	65	20	300	60	860	630	20/40
	64	2-1/2"	79	2	300	60	860	700	20/40

WELDING HOSE

Tube: EPDM/SBR blended, black and smooth

Reinforcement: Textile braided high tensile synthetic yarn

Cover: EPDM/SBR blended, blue,red,green, weather and ozone, abrasion resistant

Surface:Smooth surface

Type: Spec.1 single welding hose Spec.2 Twin welding hose

Use: For welding machine conveying welding gases

Temperature: -40°C ~+90°C (-40 °F to +194 °F)



Type	I.D.		O.D.	W.P.		B.P.		Length	Volume	Weight
	inch	mm		bar	psi	bar	psi			
Single	1/4"	6.3	13	20	300	60	900	100	0.03	0.17
	5/16"	8	15	20	300	60	900	100	0.045	0.2
	3/8"	10	17	20	300	60	900	100	0.054	0.26
Twin	1/4"&1/4"	6.3	13	20	300	60	900	100	0.06	0.34
	1/4"&5/16"	6.3+8.0	13+15	20	300	60	900	100	0.062	0.39
	5/16"&5/16"	8	15	20	300	60	900	100	0.07	0.42
	5/16"&3/8"	8.0+10	15+17	20	300	60	900	100	0.075	0.48
	3/8"&3/8"	9.5	17	20	300	60	900	100	0.08	0.52

RUBBER AIR/WATER HOSE

Tube: Black, smooth, NR/SBR rubber

Reinforcement: High tensile textile cord braided

Cover: Black/yellow/green/red, NR/SBR rubber

Surface: Wrapped surface, smooth surface

Use: A general purpose mandrel built air hose, compressor, water pump, engineered for medium to heavy duty application. It is strong flexible construction guarantees a long life and easy handling

Temperature range: -20° C + 80° C (-4 °F to +176 °F)



I.D.		O.D.		W.P.		B.P.		Weight	Bending Radius	Length
inch	mm	mm	bar	psi	bar	psi	kg/m	mm	m	
1/4"	6	13	20	300	60	900	0.17	60	100	
5/16"	8	15	20	300	60	900	0.2	75	100	
3/8"	10	18	20	300	60	900	0.24	75	100	
1/2"	13	21	20	300	60	900	0.33	100	100	
5/8"	16	25	20	300	60	900	0.45	125	100	
3/4"	19	29	20	300	60	900	0.51	150	100	
1"	25	36	20	300	60	900	0.7	200	100	
1-1/4"	32	45	20	300	60	900	1.04	250	40 / 60	
1-1/2"	38	52	20	300	60	900	1.38	300	40 / 60	
2"	51	65	20	300	60	900	1.78	350	40 / 60	
2-1/2"	64	79	20	300	60	900	2.25	450	40 / 60	
3"	76	91	20	300	60	900	2.62	450	40 / 60	
4"	102	119	20	300	60	900	4.14	600	40 / 60	

FUEL OIL HOSE

Tube: black, smooth, NBR rubber

Reinforcement: High tensile textile cord

Cover: Black/yellow/green/red, abrasion, weather and oil mist resistant synthetic rubber

Surface: Wrapped surface, smooth surface

Use: In fuel systems like gasoline, diesel fuel, also suitable for loading and unloading tank cars, automobiles, oil refine and oil related industrial, etc.

Temperature: -20°C + 80°C (-4 °F to +176 °F)



I.D.		O.D.		W.P.		B.P.		Weight	Length
inch	mm	mm	bar	psi	bar	psi	kg/m	m	
1/4"	6	13	20	300	60	900	0.15	50 / 100	
5/16"	8	15	20	300	60	900	0.21	50 / 100	
3/8"	10	17	20	300	60	900	0.27	50 / 100	
1/2"	13	21	20	300	60	900	0.35	50 / 100	
5/8"	16	25	20	300	60	900	0.5	50	
3/4"	19	29	20	300	60	900	0.61	50	
7/8"	22	33	20	300	60	900	0.69	50	
1"	25	36	20	300	60	900	0.83	50	
1-1/4"	32	43	10	150	30	450	1.2	50	
1-1/2"	38	50	10	150	30	450	1.39	50	
2"	51	65	10	150	30	450	1.8	50	

RUBBER SUCTION&DISCHARGE HOSE

Tube: Black, smooth, SBR/NBR/CR rubber compound

Reinforcement: Spec.1 high strength synthetic cord and helix wire (Suction&Discharge) Spec.2 high strength synthetic cord (only for discharge)

Cover: Black, Abrasion, ozone and weather resistant synthetic rubber

Surface: Flat surface, corrugated surface

Use: Designed to handle a wide range of air, water, oil, Slurry, sand, chemicals, acids and alcohols during production and transport operations; it is specially recommended for the transfer of industrial waters, Sea water, LPG and for use on water purification works

Temp Range: -40°C to 120°C (-40 °F to +248 °F)



I.D.		O.D.		W.P.		B.P.		Weight	Bending Radius	Length
inch	mm	mm	bar	psi	bar	psi	kg/m	mm	m	
3/4"	19	31	10	150	30	450	0.67	200	60	
1"	25	36	10	150	30	450	0.73	250	60	
1-1/4"	32	45	10	150	30	450	0.86	250	60	
1-1/2"	38	52	10	150	30	450	1	250	60	
2"	51	65	10	150	30	450	1.3	300	60	
2-1/2"	64	78	10	150	30	450	2.09	400	60	
3"	76	90	10	150	30	450	2.68	400	60	
4"	102	117	10	150	30	450	3.85	500	60	
6"	152	172	10	150	30	450	6.85	600	30	

FOOD GRADE RUBBER HOSE

Tube: White FDA standard NBR.

Reinforcement: Spec.1 high tensile textile cords with embedded steel helix wire (for suction&discharge)

Spec.2 high tensile textile cords (only for discharge)

Cover: Blue/Red/White, abrasion, ozone and oil resistant NBR.

Application: liquid and fat food-alcoholic beverages suction and delivery – max 75%.

Sterilize with 130 °C (266 °F) steam for 30 minutes or with a 5% soda solution.

Constant operation: -30 °C +100 °C (-22 °F to +212 °F)



I.D.		O.D.		W.P.		B.P.		Weight	Bending Radius	Length
inch	mm	mm	bar	psi	bar	psi	kg/m	mm	m	
3/4"	19	31	10	150	30	450	0.73	200	60	
1"	25	36	10	150	30	450	0.91	250	60	
1-1/4"	32	45	10	150	30	450	1.2	250	60	
1-1/2"	38	52	10	150	30	450	1.52	250	60	
2"	51	65	10	150	30	450	1.96	300	60	
2-1/2"	64	78	10	150	30	450	2.58	400	60	
3"	76	91	10	150	30	450	3.44	400	60	
4"	102	117	10	150	30	450	5.06	500	60	
6"	152	172	10	150	30	450	8.84	600	30	

SANDBLAST HOSE

Tube: Smooth, black, anti-static, abrasion resistant NR/CR rubber compound. Abrasion lose according to DIN 53516:1987. Max. 60-70 mm3(0.1-0.3)

Reinforcement: High tensile textile cord(Can be added copper wire or steel wire for need)

Cover: Black/Red/Blue, anti-static, weather and abrasion resistant SBR/NR rubber compound.

Surface: Wrapped Surface

Use: Delivering quartz and metal sand, polishing, ridding rust on metal surface and spraying cement. It is manufactured with anti-static rubber granting a complete discharge of static electricity

Temperature: -40°C ~+80°C (-40 °F to +176 °F)



I.D.		O.D.	W.P.		B.P.		Weight	Length
inch	mm	mm	bar	psi	bar	psi	kg/m	m
3/4"	19	33	12	174	36	522	0.66	40 / 60
1"	25	39	12	174	36	522	0.89	40 / 60
1-1/4"	32	48	12	174	36	522	1.29	40 / 60
1-1/2"	38	55	12	174	36	522	1.57	40 / 60
1"	51	70	12	174	36	522	2.39	40 / 60
2-1/2"	64	84	12	174	36	522	2.98	40 / 60
3"	76	99	12	174	36	522	4.3	40 / 60

There is more size available

RUBBER SHEET

Material	NR	CR	SBR	NBR	EPDM
	Nature	Neoprene			
Hardness(shore A)	40-85	50-80	40-85	40-90	40-85
Tensile strength (Mpa)	3-20	3-20	2-10	3-20	3-15
Density(g/cm3)	1.1-1.6	1.3-1.7	1.3-1.7	1.1-1.6	1.4-1.6
Elongation(%)	200-650	200-500	150-400	200-500	200-500
Thickness	1-50mm				
Length	1-50m				
Width	0.5-2m				
Color	Black,Red,Orange,White,gre,etc				
Surface Finish	Both sides smooth;both side fabric;one side smooth,one side cloth.				
Fabric Insertion	Spec.1 none ;Spec2.1Ply or muti plies as per client's request				



PVC LPG GAS HOSE

※PVC with high tensile strength Yam braided

※ Light ,flexible,durable,anti-UV

※Supplying gas and liquid under low pressure, especially for suppling LPG in household

※-10°C to +65°C (Good flexible under -40°C condition)



Size Inch	ID MM	OD MM	WP BAR	BP BAR	Length m/Roll	Weight KG/Roll
3/8"	9.5	15.5	10	30	22	3.8
3/8"	9.5	15.5	10	30	30	5

PVC WELDING HOSE(SINGLE/TWIN)

※PVC with high tensile strength Yarn

※Light ,flexible,durable,anti-erosin,anti-UV

※Conveying oxygen/acetylene gas in industry for welding machines.

※-10°C to +65°C (Good flexible under -40°C condition)



Size Inch	Thickness MM	WP BAR	BP BAR	Length m/Roll	Weight g/M
1/4"+1/4"	3	20	60	100	230
1/4"+5/16"	3	30	90	100	255
1/4"+3/8"	3	20	60	50	275
5/16"+5/16"	3	30	90	50	280
5/16"+3/8"	3	20	60	50	300

PVC AIR HOSE

※PVC with high tensile strength Yarn

※Working Pressure 10-50BAR

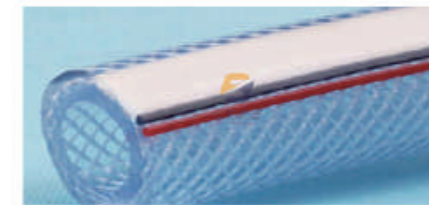
※Light ,flexible,durable,anti-UV

※General industrial applications factory air equipment.

※compressed air in garages and service stations, automation machinery and service station.

※Pneumatic tools,nail guns.

※-10°C to +65°C (Good flexible under -40°C condition)



Size Inch	ID MM	OD MM	WP BAR	BP BAR	Length m/Roll	Weight g/M
1/4"	6.5	12.5	20	60	100	130
1/4"	6.5	12.5	50	150	100	130
5/16"	8	14.5	20	60	100	170
5/16"	8	14.5	50	150	100	170
3/8"	10	16	20	60	100	200
3/8"	10	16	20	60	100	200
1/2"	13	19	20	60	50	200
1/2"	13	19	40	120	50	200
5/8"	16	22	15	45	50	260
5/8"	16	22	35	105	50	260
3/4"	19	26	15	45	50	340
3/4"	19	26	30	90	50	340
1"	25	33	15	45	50	500
1"	25	33	20	60	50	500
1-1/4"	32	42	8	24	50	800
1-1/4"	32	42	15	45	50	800
1-1/2"	38	48	8	24	50	940

PVC LAYFLAT HOSE

- ※PVC with high tensile strength Yarn Braided
- ※Light weight,good flexibility,anti-aging, anti-uv.
- ※Easy use&storage, different colors are available.
- ※ Suitable for conveying liquid materials in industry,agricultural irrigation, mines.

PVC LAYFLAT HOSE (4BAR)

Size Inch	ID MM	Thickness MM	WP BAR	BP BAR	Length m/Roll	Weight g/M
1"	25	1.13	4	15	100	150
1-1/4"	32	1.2	4	15	100	170
1-1/2"	38	1.2	4	15	100	200
2"	51	1	4	12	100	230
2-1/2"	65	1.1	4	12	100	320
3"	76	1.1	4	12	100	350
4"	102	1.25	4	12	100	550
5"	127	1.35	3.5	10	100	750
6"	152	1.35	3	9	100	850
8"	203	2	3	9	100	1700
10"	254	2.4	2.5	7	100	2600
12"	305	2.35	2	6	100	3000



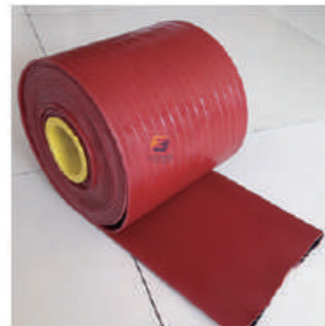
PVC LAYFLAT HOSE (6BAR)

Size Inch	ID MM	Thickness MM	WP BAR	BP BAR	Length m/Roll	Weight g/M
3/4"	19	1.35	6	21	100	110
1"	25	1.3	6	21	100	160
1-1/4"	32	1.2	6	21	100	190
1-1/2"	38	1.2	6	21	100	220
2"	51	1.35	6	18	100	300
2-1/2"	65	1.55	6	18	100	430
3"	76	1.5	6	18	100	500
4"	102	1.9	6	18	100	700
5"	127	2	6	10	100	1100
6"	152	2.4	6	18	100	1600
8"	203	2.6	5	15	100	2000



HEAVY DUTY PVC LAYFLAT HOSE (8/10BAR)

Size Inch	ID MM	Thickness MM	WP BAR	BP BAR	Length m/Roll	Weight g/M
3/4"	19	1.55	10	30	50	140
1"	25	1.8	10	30	50	200
1-1/4"	32	1.5	10	30	50	210
1-1/2"	38	1.7	10	30	50	290
1-1/2"	40	1.9	10	30	50	300
1-3/4"	45	2	10	30	50	350
2"	51	1.55	8	24	50	400
2"	51	1.8	10	30	50	420
2-1/2"	65	1.8	10	30	50	650
2-1/2"	65	1.9	10	30	50	700
3"	76	2	8	24	50	800
3"	76	2.55	10	30	50	850
4"	102	2.25	8	24	50	1000
4"	102	2.7	10	30	50	1200
5"	127	2.8	8	24	50	1500
6"	152	3	8	24	50	2100
8"	203	3.2	6	18	50	3000



DOUBLE KOREA TECHNICA PVC LAYFLAT HOSE

Size Inch	ID MM	Thickness MM	WP BAR	BP BAR	Length m/Roll	Weight g/M
2"	51	1.3	6	18	100	330
3"	76	1.3	5	15	100	450
4"	102	1.4	5	15	100	600
6"	152	1.8	4	12	100	1200
8"	207	2.2	4	12	100	2000



PVC STEEL WIRE HOSE

PVC STEEL WIRE SPIRAL HOSE

- ※Spiral steel wire reinforced incorporated within the wall of flexible pvc tubing; add one more cooper wire line to make hose anti-static
- ※Used for drawing and conveying water, oil,powder, agriculture, engineering, foodstuffs and seweare
- ※High-qualaity, low price, higher cost performance
- ※Thickness is customized

Size Inch	ID MM	OD MM	WP BAR	BP BAR	Length m/Roll	Weight g/M
3/4"	19	24	5	15	50	250
1"	25	29	4	12	50	370
1"	25	33	5	16	50	540
1-1/4"	32	36	3	9	50	400
1-1/2"	38	44	3	9	50	600
1-3/4"	45	56	5	15	50	1300
1-7/8"	48	56	3	9	50	1000
2"	50	62	5	15	50	1600
2-1/2"	64	72	2	6	30	1500
3"	76	84	2	6	30	1600
3-1/2"	90	102	2	6	30	3000
4"	102	113	2	6	20	3000



PVC STEEL&FIBER COMPOSITE HOSE

- ※PVC With High tensile strength fibers and high quality galvanized spring wire Reinforced.
- ※Durable,anti-UV.Compared with the single spring wire reinforced hose, the pressure is higher 2-4 times.
- ※Used for drawing and conveying water, oil and powder in factory,agriculture.
- ※-10°C to +65°C (Good flexible under -40°C condition)



Size Inch	ID MM	OD MM	WP BAR	BP BAR	Length m/Roll	Weight g/M
3/8"	10	16	7	21	100	200
1/2"	12	18	7	21	100	250
5/8"	16	22	7	21	100	300
3/4"	19	25	7	21	100	400
1"	25	32	6	18	100	500
1-1/4"	32	40	5	15	100	800
1-1/2"	38	47	5	15	100	1000
2"	50	60	5	15	100	1400
2.5"	64	74	4	12	100	2000
3"	75	85	4	12	100	2200

PVC TRANSPARENT HOSE

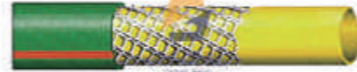
- ※Flexible,light weight,anti-abrasion,anti-uv.
- ※Used for conveying water,oil,gas under normal working condition in factories,farm,ship,building and family.
- ※Can be restored to original shape even if squashed.
- ※-10°C to +65°C (Good flexible under -40°C condition)



Size Inch	ID MM	OD MM	WP BAR	BP BAR	Length m/Roll	Weight g/M
1/8"	3	5	2	6	100	17
5/32"	4	6	2	6	100	21
3/16"	5	7	2	6	100	25
1/4"	6	8	1.5	4.5	100	29
5/16"	8	10	1.5	4.5	100	38
3/8"	10	12	1.5	4.5	100	46
1/2"	12	15	1.5	4.5	100	85
5/8"	15	18	1	3	100	105
3/4"	19	22	1	3	100	130
1"	25	29	1	3	100	229
1-1/4"	32	38	1	3	100	445
1-1/2"	38	44	1	3	100	521
2"	50	58	1	3	100	915

PVC CROCHET ANTI-TWIST HOSE

- ※Special selected PVC Material,Inner layer waving and outer layer anti-winding crocheting reinforced
- ※Good pressure resistance and flexible,and is not easy to twist and Knit
- ※Anti-age design,increase durability and prevents algae from bending
- ※Use for car washing,garden watering and irrigation in gardens,communities,factories and homes.



Size Inch	ID MM	OD MM	WP BAR	BP BAR	Length m/Roll	Weight g/M
5/8"	16	25	15	45	100	0.26
3/4"	19	26	15	45	100	0.34
1"	25	33	15	45	100	0.5
1-1/4"	32	42	8	24	100	0.8

PVC GARDEN HOSE

- ※Three layers, top quality pvc material made inner tube, reinforced braided
- ※For garden irrigation, vehicle washing, and daily washing
- ※Multiple colors is available
- ※Flexible ,anti-uv



Size Inch	ID MM	OD MM	WP BAR	BP BAR	Length m/Roll	Weight g/M
1/2"	12	15.4	5	15	30	98
1/2"	12	16	7	21	30	118
5/8"	15	19	5	15	30	144
5/8"	15	20	6	18	30	185
3/4"	19	23	4	12	30	175
3/4"	19	24	5	15	30	228
1"	25	29	3	9	30	229
1"	25	30	4	12	30	291

PVC SUCTION HOSE

- ※Made of quality pvc reinforced with an integral helix of rigid PVC
- ※Corrugated outer surface provide with flexibility and small bending radius
- ※Smooth inner surface are excellent for conveying liquid, air, powders
- ※High abrasion resistant

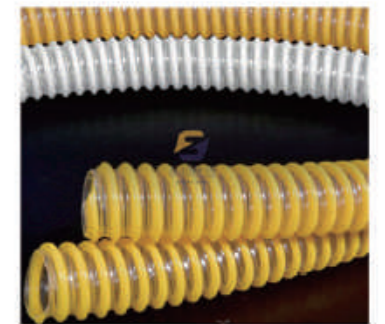
PVC SUCTION HOSE(FLAT SURFACE)

Size Inch	ID MM	OD MM	WP BAR	BP BAR	Length m/Roll	Weight g/M
3/4"	19	25	8	24	30	280
1"	25	31	8	24	30	350
1-1/4"	32	40	8	24	30	500
1-1/2"	38	48	8	24	30	750
2"	50	60	7	21	30	1050
2-1/2"	63	73	6	18	30	1300
3"	75	87	5	15	30	1900
4"	100	114	5	15	30	3200
5"	125	139	4	12	20	3600
5"	125	141	4	12	20	4000
6"	152	170	4	12	10	7200
6"	152	174	5	15	10	8000
8"	200	216	3	9	10	6700



PVC SUCTION HOSE(RIGID SURFACE)

Size Inch	ID MM	OD MM	WP BAR	BP BAR	Length m/Roll	Weight g/M
3/4"	19	23	6	18	30	230
1"	25	31	6	18	30	350
1-1/4"	32	36	6	18	30	350
1-1/2"	38	44	6	18	30	550
2"	50	54	5	15	30	550
2-1/2"	63	69	4	12	30	880
3"	75	81	3	9	30	1160
4"	100	108	3	9	30	1950
5"	125	135	3	9	20	3000
6"	152	166	2	6	10	5500
8"	200	214	2	6	10	6300
12"	305	2.35	2	6	100	3000



PVC SUCTION & FIBER COMPOSITE HOSE

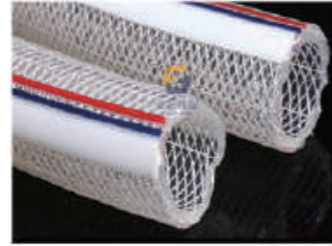
- ※Use high-strength fibers as reinforcement. Combine the features of suction hose & fiber hose.
- ※Soft, flexible,abrasion resistance
- ※Non-toxic, used for conveying water, oil, powder, also can be used for conveying wine, juice etc.
- ※Crushing abrasion and weather resistance

Size Inch	ID MM	OD MM	WP BAR	BP BAR	Length m/Roll	Weight g/M
2"	50	60	8	24	30	1000
2-1/2"	63	74	7	21	30	1400
3"	75	86	6	18	30	1700
4"	102	111	6	18	30	2500
5"	125	143	5	15	20	4400
6"	152	168	5	15	10	5800
8"	200	216	4	12	10	8500



PVC FIBER REINFORCED HOSE

- ※Made of special PVC material and high strength fiber
- ※High quality, low price, higher performance
- ※Working under 100°C condition, suitable for different high temperature environments. Or -40°C condition
- ※Anti-uv
- ※Supplying water, gas, oil in agriculture and industry, Food grade material can be used for foodstuffs and sanitation industry



Size Inch	ID MM	OD MM	WP BAR	BP BAR	Length m/Roll	Weight g/M
1/4"	6	11	12	35	100	90
5/16"	8	13	10	30	100	111
3/8"	10	15	10	30	100	132
1/2"	12	18	9	27	100	190
5/8"	16	22	8	24	50	241
3/4"	19	25	6	18	50	280
1"	25	31	5	15	50	356
1-1/4"	32	40	4	12	40	610
1-1/2"	38	46	4	12	40	712
2"	50	62	4	12	30	1424

PVC SPRAY HOSE

- ※PVC with high tensile strength yarn reinforced
- ※Light, flexible, durable, anti-acid, alkaline. Good flexible and adaptability against climate
- ※The hose is widely used in high pressure industrial, compressors, service station and pneumatic tools.

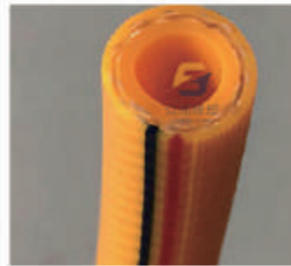
3PLY SPRAY HOSE

Size Inch	ID MM	OD MM	WP BAR	BP BAR	Length m/Roll	Weight g/M
1/4"	6.5	11.5	40	120	100	98
5/16"	8	13	40	120	100	115
5/16"	8	13.5	40	120	100	130
5/16"	8.5	13.5	40	120	100	120
5/16"	8	14	40	120	100	145
3/8"	10	15	40	120	100	137



5PLY SPRAY HOSE

Size Inch	ID MM	OD MM	WP BAR	BP BAR	Length m/Roll	Weight g/M
1/4"	6.5	12	60	180	100	112
5/16"	8	13.5	60	180	100	130
5/16"	8	14	60	180	100	146
5/16"	8.5	14	60	180	100	140
3/8"	10	16	60	180	100	173
1/2"	13	19	60	180	100	210



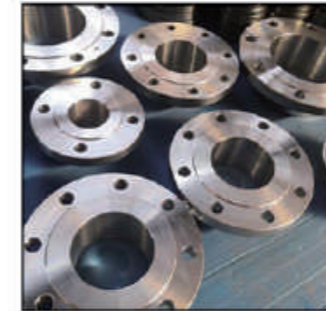
FULL DENSE KOREA TECHNICA BRAIDED SPRAY HOSE

Size Inch	ID MM	OD MM	WP BAR	BP BAR	Length m/Roll	Weight g/M
1/4"	6.5	12	60	200	100	110
5/16"	8	13.5	60	200	100	125
5/16"	8	14	60	200	100	140
5/16"	8.5	14	60	200	100	130
3/8"	10	16	60	180	100	165
1/2"	13	19	60	180	100	200



ACCESSORIES

Flange



Carbon Steel Flange



Stainless Steel Flange

Couplings



Camlock Couplings



Bauer Couplings

Clamps



EUROPEAN TYPE HOSE CLAMP



EUROPEAN TYPE DOUBLE BOLT CLAMP



Spiral Clamp

Machine for dredger



Manual Winch



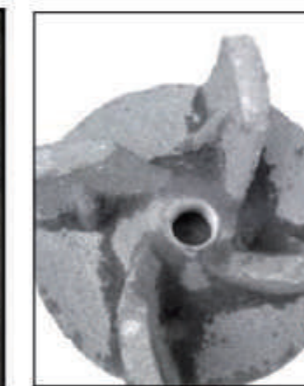
Winner



Dredging Pump



Propeller



Impeller



Diesel Engine